



# nuSIM™

**Dynamic & Interactive 3D-Visualization**  
Real-time

For

**Physical Security**  
Government, IoT, Smart City, & Smart Enterprise

# What is nuSIM™?

- 3D Advanced Mapping Solution:
  - Plug-In for
  - Physical Security Information Management (PSIM)
  - Video Management System (VMS)
  
- Adds Advanced Mapping Capabilities to PSIM
  - Dynamic
  - interactive
  
- Patented Technology
  - GPU-Based
  - Image-Rendering

# Why nuSIM™?

- Legacy Physical Security Visualization
  - Can not scale
  - Not Interactive
  - Relies on old practices
  
- Need for Real Time VideoStream
  
- On Screen Visual Alarms required
  
- Higher Visualization Capacity for IoT

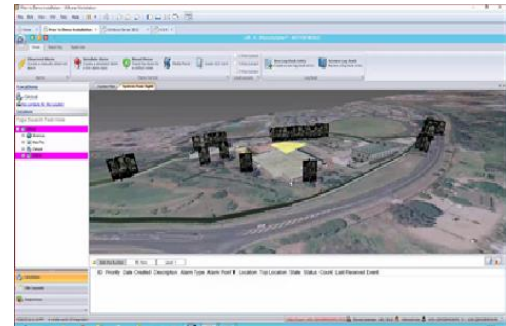
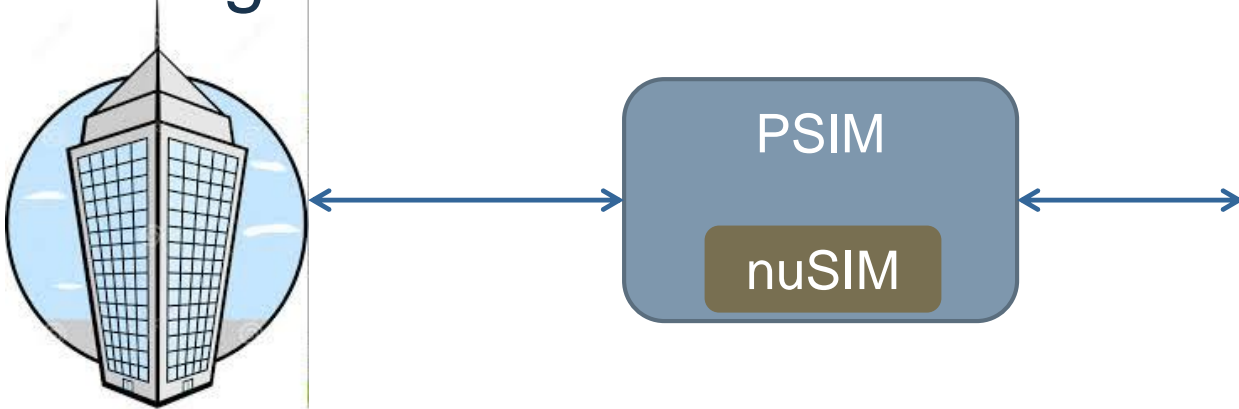
# What are nuSIM™ competitive advantages?

- Performance: Fastest 3D-Visualization in the world
  - Patented Real-time Rendering Technology
  - Fastest including for
    - Loading
    - Drawing
    - Navigation
    - Refresh
    - alarming
  
- Scalability: to massive number of objects
  - Common in infrastructure & IoT
  
- Smart Vizualization
  - Any-Object Identification
  - Visual awareness

# How does nuSIM™ work?

- Stand-Alone
  - Not released, nor advertized yet

- Integrated



# What are nuSIM™ benefits for end-user?

- ✓ More Granular Site Visualization
- ✓ Walk Through scenarios
- ✓ Rapid Event Isolation
- ✓ Holistic Approach for Physical Security
- ✓ As long as PSIM knows about it, you can visualize it

# nuSIM™ look & feel



# nuSIM™

## Uniqueness

- 3D-Visualization real-time for Physical Security: PSIM & VMS
  - Physical
  - Logical
  - Security Networks of Cameras & Sensors
  
- Fastest Performance in the world
  - Patented technology
  
- Scalable to any customer network & infrastructure
  - Enterprise      Service Providers      IoT      Government
  
- Smart-Object Visualization
  - Any-Object Identification
  - Visual Awareness